

# Durées des notes et des silences

© Guitare-et-couleurs.com

*Remarquez que les croches, doubles croches, etc. peuvent être liées.*

*Elles sont représentées liées puis non liées pour que vous puissiez comparer l'intérêt des deux modes de représentation.*

1 Métronome 2 3

Notes Ronde = 4 temps Blanche = 2 temps

Silences Pause = 4 temps Demi pause = 2 temps

Detailed description: This section shows three measures of music in 4/4 time. Measure 1 is labeled '1 Métronome' and contains four quarter notes (red stems, black heads) on a treble clef staff. Measure 2 is labeled '2' and contains a single half note (purple stem, black head). Measure 3 is labeled '3' and contains two quarter notes (purple stems, black heads). Below the staff, the notes are labeled 'Notes' in purple. The first measure is also labeled 'Notes' in purple. The second measure is labeled 'Ronde = 4 temps' in black. The third measure is labeled 'Blanche = 2 temps' in black. Below the staff, the silences are labeled 'Silences' in green. The first measure is labeled 'Silences' in green. The second measure is labeled 'Pause = 4 temps' in black. The third measure is labeled 'Demi pause = 2 temps' in black.

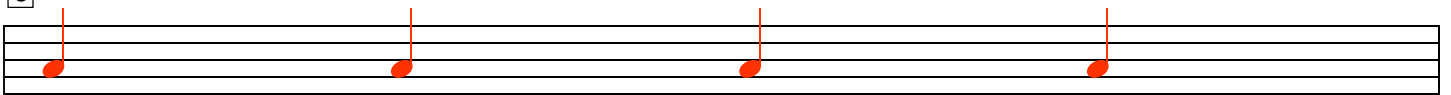
4 5

Noire = 1 temps Croche = 1/2 temps

Soupir = 1 temps Demi soupir = 1/2 temps

Detailed description: This section shows two measures of music in 4/4 time. Measure 4 is labeled '4' and contains four quarter notes (red stems, black heads) on a treble clef staff. Measure 5 is labeled '5' and contains four eighth notes (red stems, black heads) on a treble clef staff. Below the staff, the notes are labeled 'Noire = 1 temps' in black. The first measure is labeled 'Noire = 1 temps' in black. The second measure is labeled 'Croche = 1/2 temps' in black. Below the staff, the notes are labeled 'Soupir = 1 temps' in black. The first measure is labeled 'Soupir = 1 temps' in black. The second measure is labeled 'Demi soupir = 1/2 temps' in black.

6



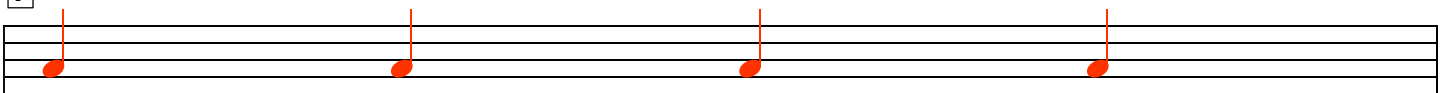
Double croche = 1/4 de temps



Quart de soupir = 1/4 de temps



7



Triple croche = 1/8 de temps



Huitième de soupir = 1/8 de temps

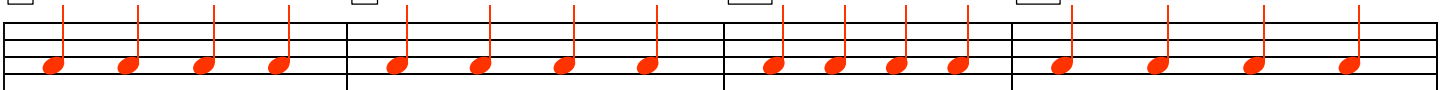


8

9

10

11



Quelques exemples de notes pointées... A la mesure 10, le symbole de liaison ajoute la valeur de la seconde note à celle de la première.

